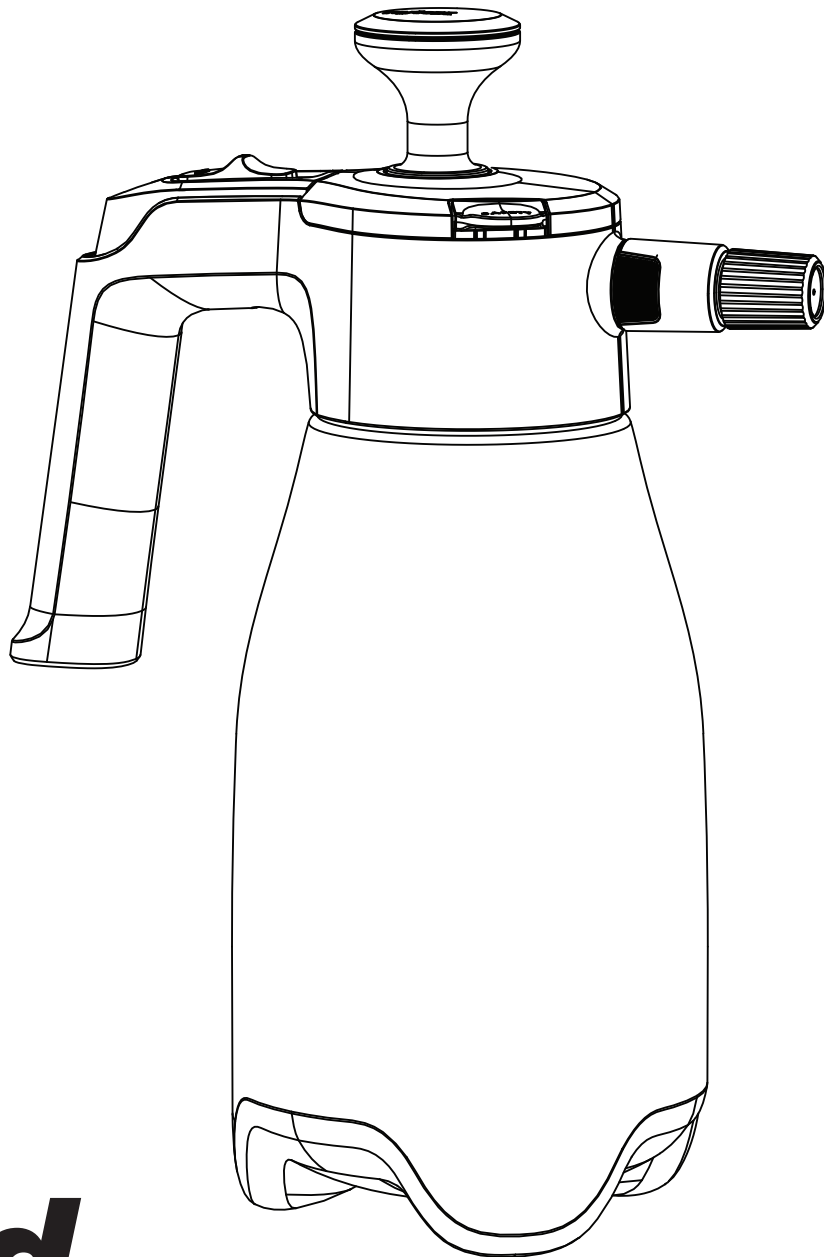


nylex

2L



Hand Sprayer

Instruction Manual

nylex

Hand Sprayer Instruction Manual

Product Code: 50137761

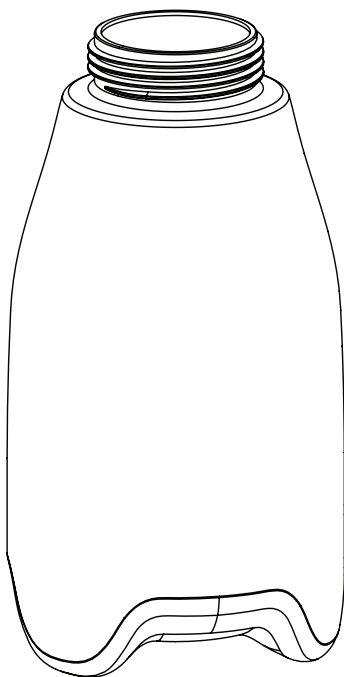
Caution



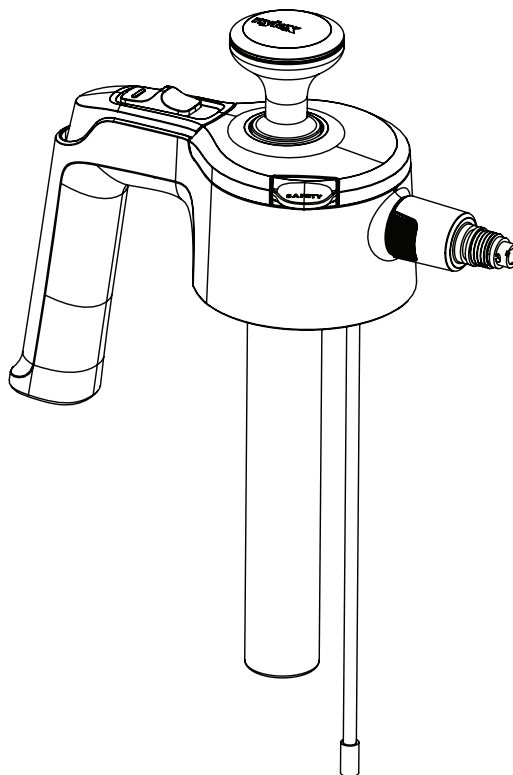
Read instruction manual completely before operating this sprayer.
Failure to comply may result in serious injury.

- *The sprayer is designed and manufactured solely for use with liquid chemicals used for gardening, horticulture, agriculture and disinfecting when resistance to aggressive chemicals is required. Under no circumstances may it be used for any other purposes.*
- *Refer to the MSDS Sheet or chemical manufacturer for correct use and safe handling instructions of chemicals before filling or using the sprayer.*
- *Never use this sprayer with any flammable liquids, caustics, acids or hot water.*
- *Always wear the recommended safety protective clothing and equipment when handling chemicals and operating the sprayer.*
- *Refer to the chemical manufacturer for correct disposal of empty chemical containers and chemical residue.*
- *Keep the sprayer and all chemicals out of the reach of children and pets.*

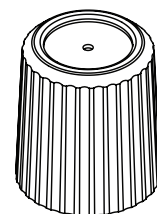
Included Parts



Tank (A)



Tank Lid (B)



Cone Nozzle (C)

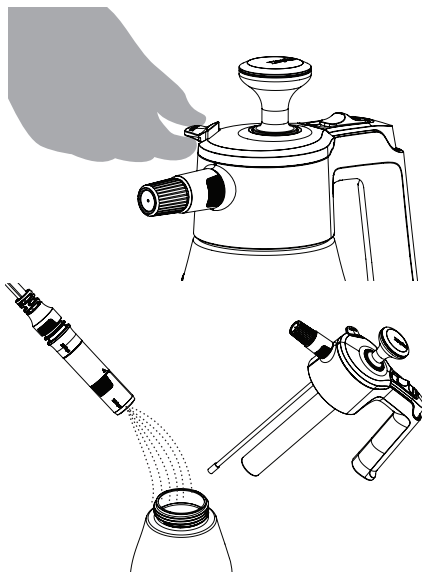
Operation Instructions



Warning

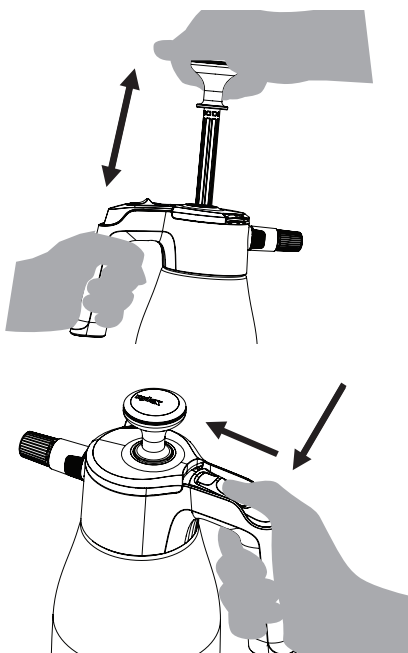
Read instruction manual completely before operating this sprayer.
Failure to comply may result in serious injury.

- Always check the MSDS Sheet or consult the chemical manufacturer before use.
- Never use this sprayer with any flammable liquids, caustics, acids or hot water.
- Always release sprayer pressure when not in use or performing any maintenance.
- Test the sprayer with water before using with chemical solutions. Always inspect connections before each use. Damaged components may cause exposure to pressurised chemicals, resulting in serious injury.
- Do not spray in windy conditions or near open flames, as this may cause ignition or uncontrolled chemical exposure.
- Always wear the recommended safety protective clothing and equipment when handling chemicals and operating the sprayer.
- Always direct the nozzle away from your face and body during use.



Filling:

1. Stand the sprayer tank (A) on a level surface, release any pressure from sprayer by lifting the safety relief valve and turning the tank lid (B) anti-clockwise.
2. Before filling the sprayer with a chemical solution, fill the sprayer with water to check all connection points do not leak. Screw the tank lid (B) back onto sprayer until it is tightly sealed.
3. Check all connection points and pour out the water.
4. Fill the tank (A) with water/chemical solution to the desired level. **Do not fill above the maximum capacity.** Screw the tank lid (B) back onto sprayer until it is tightly sealed.



The Sprayer Is Now Ready For Use:

1. Pump the handle in an up and down motion to build pressure until you feel firm resistance. **Do not over-pressurise.**
2. Release the spray by pressing down the trigger. Switch control from intermittent to continuous spray by holding down the trigger and pushing in the trigger lock.
3. Pump handle as needed to maintain sprayer pressure.

Sprayer Aftercare

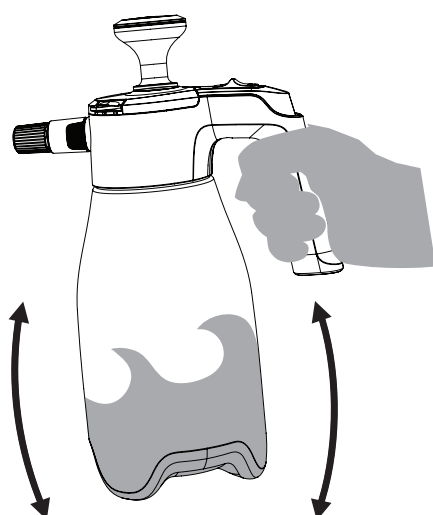


Warning

Read instruction manual completely before operating this sprayer.

Failure to comply may result in serious injury.

- Always release sprayer pressure when not in use or performing any maintenance.
- Never attempt to clear any nozzles or components by mouth. Always direct the nozzle away from your face and body during use.
- Do not leave the sprayer in the sun when not in use.
- Always clean and rinse the sprayer thoroughly after each use. Do not store any chemicals in the sprayer.
- Never attempt to alter sprayer from its original condition. Maintain it using only original manufacturer parts.



Maintenance & Cleaning:

1. Always release pressure when the sprayer is not in use or before carrying out any maintenance. This is done by lifting safety relief valve and letting out as much air as possible.
2. Once all the pressure has been released, unscrew the tank lid (B) by turning it anti-clockwise and empty any liquid left inside the tank (A).
3. Fill the tank (A) with cool, clean tap water, and replace tank lid (B) back onto sprayer. Shake the sprayer to ensure it rinses all internal surfaces.
4. Use the trigger to flush out the sprayer until the tank (A) is empty. Repeat if needed.
5. Remove the cone nozzle (C) and rinse under cold water to remove any chemical build up. Replace back onto sprayer or a safe place.
6. Ensure the sprayer is not pressurised and tank (A) contains no liquid. Allow the sprayer to fully dry and store in a cool dry place, out of direct sunlight and out of reach of children and pets.

Warranty

AMES Australasia Pty Ltd (AMES) guarantees that this product will be free from defects in workmanship and materials for 3 years from the date of purchase. If such a defect becomes evident during that period, AMES will, at its option, either repair, replace or refund the product. In the event of such a defect, the product should be returned to the place of purchase (together with proof of purchase and the original packaging) at the address below. Any handling and transportation costs (and other expenses incurred in claiming under this guarantee) are not covered by this guarantee and will not be borne by AMES. The obligation of AMES under this guarantee is limited to the circumstances set out above and is subject to; the customer being able to evidence the acquisition of the product, the purchase price paid for the product and the relevant defect in materials or workmanship; the product not having been altered, tampered with or otherwise dealt with by any person in a manner other than as intended in respect of the relevant product; and the product not having been used or applied in a manner that is contrary to customary usage or application for the relevant product or contrary to any stated instructions or specifications of AMES. In addition to other rights and remedies that may be available under law, our goods come with guarantees that cannot be excluded under the Australian Consumer Law (for consumers in Australia) and the Consumer Guarantees Act (for consumers in NZ). If you are a consumer in Australia, you are entitled to a replacement or refund for a major failure and compensation for any other reasonably foreseeable loss or damage. You are also entitled to have the goods repaired or replaced if the goods fail to be of acceptable quality and the failure does not amount to a major failure. If you are a consumer in New Zealand, we will comply with our obligations to you under the Consumer Guarantees Act.

For further information contact us on

Email: nylex@amesau.com
Australia Free Call: 1300 381 559
New Zealand: 0800 447 144

AMES Australasia
ABN 89 169 427 061
Level 1, 660 Doncaster Road,
Doncaster, Victoria, 3108, Australia.



@nylexwatering
www.nylex.com.au

Important: If for some reason your sprayer needs to be returned for warranty purposes, PLEASE wash it out thoroughly to protect our service technicians from exposure to unknown substances.



**Scan for more
information**